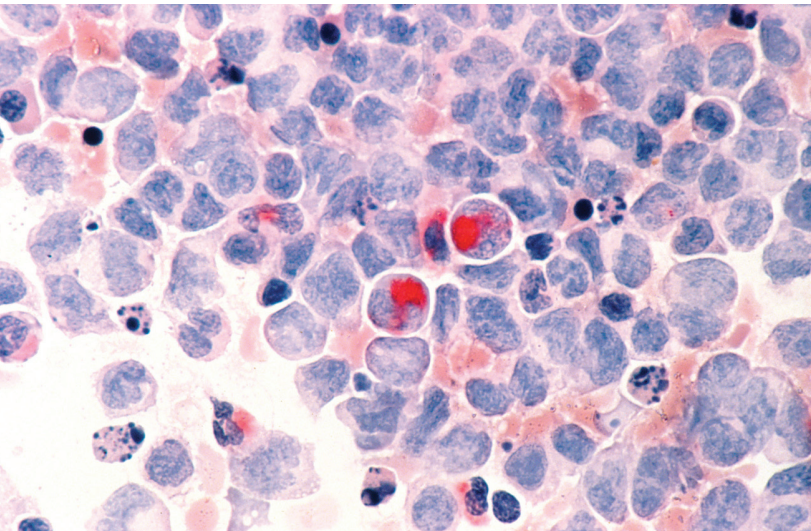


EPIDEMIOLOGY



This highly-ranked MPH program prepares future leaders in epidemiology to analyze public health trends, design and implement studies, and interpret and translate key data to policy makers, community leaders, health providers, and others. Beyond investigations into the determinants of health and disease, epidemiologists translate medical and laboratory data into population trends to identify changes in the public health burden of disease.

Our unique program infrastructure combines Epidemiology, Public Health Nutrition, Maternal & Child Health, and Community Health in one department, giving students access to faculty across disciplines.

PROGRAM OVERVIEW

STANDARD PROGRAM

In the standard program, students complete 48 credits, including 37-38 credits of required coursework and 9-10 credits of electives. Students tailor the program to their individual needs and interests through electives in epidemiology or other health-related graduate-level courses. These courses enable students to develop a specialty emphasis in either specific public health topics or methodological areas.

INFECTIOUS DISEASE EPIDEMIOLOGY TRACK

This track requires 48 credits and is designed for students interested in a career in infectious disease epidemiology.

ACCELERATED PROGRAM

The accelerated program is available for students who have completed an MD, DDS, DVM, or PhD in a related field. This program includes 34 credits of required coursework and 7-8 credits of electives.

ADVANTAGES OF THE PROGRAM

Connections. A long and close partnership with the Minnesota Department of Health—one of the best health departments in the country—provides field experiences, professional mentorship, and career opportunities.

Integrated health sciences. The University of Minnesota's innovative infrastructure of six health sciences schools—one of three such models in the country—gives our students the ability to learn from and work with a diverse array of health experts.

Supportive environment. Students receive personal attention from world renowned epidemiology faculty, and a network of more than 10,000 alumni who are dedicated to student success.

Comprehensive curriculum. Grounded in current approaches to biologic and behavioral epidemiology, students are well-prepared with the skills needed for a successful career.

High ranking. A degree from a top 10 school of public health provides distinction in competitive career environments.

WHO SHOULD APPLY?

Epidemiology MPH students come from a variety of backgrounds, including biology, law, mathematics, microbiology, genetics, medicine, and social and behavioral sciences. Preference is given to applicants with strong quantitative and analytic abilities. Admitted students must be comfortable learning statistical methods to address problems in human health and disease.

CAREER

The current national job market for epidemiology graduates is extremely strong, and spans a variety of fields and positions. Graduates are well-prepared to work in private companies and NGOs, national and international organizations, and state and local departments of health on surveillance and disease control programs, data management, and research and development. This is also a great foundation for students who want to pursue advanced degrees such as PhD, MD, DDS or DVM degrees. Many graduates go on to national and international research careers in academia and research organizations.

POSITIONS HELD BY GRADUATES

UCare Minnesota
Healthcare Analyst

Minneapolis Medical Research Foundation, Inc.
Research Coordinator

United HealthCare Services, Inc.
Healthcare Economics Analyst

Minnesota Department of Health
Disease Intervention Specialist

Centers for Disease Control (CDC)
Analyst

Regulatory and Clinical Research Institute, Minnesota
Epidemiologist

ADMISSIONS

APPLICATION REQUIREMENTS

- Official transcripts
- Resume or curriculum vitae (CV)
- GRE scores
- 3 letters of recommendation
- Statement of purpose and objectives

RECOMMENDATIONS

- 70th percentile on the quantitative section of the GRE
- Relevant experience in a public health or related setting

APPLICATION DEADLINE

Scholarship priority deadline: **December 1**
Final deadline: **May 1**

AFFILIATED RESEARCH CENTERS

- Center for Global Health and Social Responsibility
- Masonic Cancer Center
- Center to Study Human-Animal Relationships and Environments (CENSHARE)
- Minnesota Population Center
- Upper Midwest Agricultural Safety and Health Center
- Center for Leadership Education in Maternal & Child Public Health
- Center on Aging
- Epidemiology Clinical Research Center (ECRC)
- Obesity Prevention Center

DUAL-DEGREE OPTION

MPH/JD, U of M Law School

EXPERT FACULTY

Epidemiology students engage with faculty (one profiled below) who are deeply involved in current practice and research.



Nicole Basta is an infectious disease epidemiologist who advances our understanding of the transmission dynamics of infectious diseases and the impact of vaccines and other prevention and control strategies. Her work focuses on influenza, meningococcal disease, and HPV, where she aims to reduce the burden of infectious diseases by developing a rigorous evidence base that can inform public health policy.

© 2018 The University of Minnesota is an equal opportunity educator and employer. Printed on recycled and recyclable paper with at least 10 percent postconsumer waste material. This material is available in alternative formats upon request: 612-626-8802.

FOR MORE INFORMATION:
Student and Academic Support Services
Division of Epidemiology & Community Health
Email: epichstu@umn.edu
Phone: 612-626-8802

SPH.UMN.EDU



**SCHOOL OF
PUBLIC HEALTH**
UNIVERSITY OF MINNESOTA