

UNIVERSITY
OF MINNESOTA

**School of
Public Health**

Division of Health Policy
and Management

Seventeenth Annual

Minnesota Health Services Research Conference

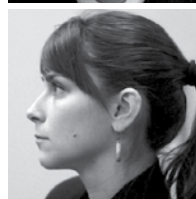
CONTINUING EDUCATION AND CONFERENCE CENTER
ST. PAUL CAMPUS, UNIVERSITY OF MINNESOTA

Tuesday, March 5, 2013

Conference Information & Registration

Sponsoring Organizations:

Allina Hospitals & Clinics
Blue Cross Blue Shield of Minnesota
Center for Care Organization
Research & Development
Essentia Institute of Rural Health
Fairview Health Services
HealthPartners Institute for Education & Research
Mayo Clinic
Medica / Medica Research Institute
Minnesota Department of Health
Minnesota Department of Human Services
Minneapolis Veteran's Administration Center
for Chronic Disease Outcomes Research
National Marrow Donor Program
Park Nicollet
PreferredOne
Stratis Health
Tarrget Corporation
University of Minnesota, Division
of Health Policy and Management



Goals



Allina Hospitals & Clinics, Blue Cross Blue Shield of Minnesota, Center for Care Organization Research & Development, Essentia Institute of Rural Health, Fairview Health Services, HealthPartners Research Foundation, Mayo Clinic, Medica / Medica Research Institute, Minnesota Department of Health, Minnesota Department of Human Services, Minneapolis Veteran's Administration Center for Chronic Disease Outcomes Research, National Marrow Donor Program, Park Nicollet Institute, PreferredOne, Stratis Health, and the University of Minnesota School of Public Health Division of Health Policy and Management are pleased to convene the **SEVENTEENTH ANNUAL MINNESOTA HEALTH SERVICES RESEARCH CONFERENCE**.

The **purpose** of this conference is to bring together Minnesota's health services research community for a day of scholarly presentations and discussions. The **goal** is to establish a dialog among all those doing health services research in Minnesota.

The sponsors encourage health services researchers, health care providers, public health officials, health care administrators, and any others interested in health care policy and research to attend.

The conference would like to thank the sponsors for all of their hard work and financial support in making this event a success.

'If I ruled the (Primary Care) world...'

Kath Checkland, PhD

Clinical Senior Lecturer, Primary Care
Health Policy, Politics & Organisation Research Group
School of Community-based Medicine
University of Manchester

Keynote Address at 8:15 a.m.



Dr Kath Checkland qualified as a doctor in 1985, and subsequently trained as a GP (Family doctor). She worked as a partner in a Primary Care Practice for the next 8 years, whilst bringing up two children. In 1999 she decided to return to academic work, and undertook a Masters degree in Applied Social Research, followed by a PhD at the University of Manchester, whilst continuing to work part time in practice. She is currently a Clinical Senior Lecturer in Primary Care at the University of Manchester.

Kath's research explores the impact of health policy on health care organisations, with a particular focus on primary care. Her current research interests include the impact of the current UK health reforms, and the development of 'commissioning' as a means of planning and delivering healthcare services. She is an Associate Director of the UK Department of Health funded Policy Research Unit in Commissioning and the Healthcare System, and has just completed a project exploring the development of the new Clinical Commissioning Groups in England. Her research is predominantly qualitative in approach, particularly using observational methods in order to gain insights into the actual work done by individuals and organisations.

Kath continues to work 2 days a week as a GP in a small rural practice in Derbyshire, UK.

Keynote

Seventeenth Annual

Minnesota Health Services Research Conference

March 5, 2013

7:15–8:00 AM	Registration, Continental Breakfast, Exhibits by Sponsoring Organizations	
8:00–8:15 AM	Welcome: Doug Wholey, PhD, University of Minnesota School of Public Health, Division of Health Policy and Management	Room 135
8:15–9:15 AM	Introduction of Keynote Speaker: April Seifert, Ph.D., Benefits Analyst Manager, Target Corporation, Minnesota Health Services Research Conference Honorary Chair Keynote Address: ‘If I ruled the (Primary Care) world...’ Dr Kath Checkland, Clinical Senior Lecturer in Primary Care; Health Policy, Politics & Organisation (HiPPO) Research Group, School of Community-based Medicine, University of Manchester, England	Room 135

CONCURRENT SESSION ONE

9:45–11:00 AM	Session 1A SYMPOSIUM Putting Out the Welcome Mat— Targeting Outreach Efforts under the Affordable Care Act CONVENER: Stephanie Radtke	Room 135AC	Session 1B PAPER SESSION Quality 1 CONVENER: Ellen Denzen	Room 135BD
---------------	--	------------	--	------------

CONCURRENT SESSION TWO

11:15 AM–12:30 PM	Session 2A SYMPOSIUM Evaluating Minnesota’s Health Care Home CONVENER: Doug Wholey	Room 135AC	Session 2B SYMPOSIUM Evaluating Health Care Reform: Are Federal and State Surveys Meeting the Need? CONVENER: Donna Spencer	Room 135BD
-------------------	--	------------	--	------------

12:30–1:30 PM	Lunch Announcement of Student Paper Competition Award Winners			
---------------	--	--	--	--

CONCURRENT SESSION THREE

1:45–3:00 PM	Session 3A SYMPOSIUM LifeCourse: Development and Implementation of a Late Life Supportive Care Intervention CONVENER: Eric Anderson	Room 135AC	Session 3B PAPER SESSION Methods CONVENER: Kevan Edwards	Room 135BD
--------------	--	------------	---	------------

CONCURRENT SESSION FOUR

3:15–4:30 PM	Session 4A PAPER SESSION Insurance/ ACA CONVENER: Nina Alesci	Room 135AC	Session 4B PAPER SESSION Quality 2 CONVENER: Steven Dehmer	Room 135BD
4:30–6:00 PM	Networking and Cocktail			

Schedule

Session 1C*Room 155***PAPER SESSION****Hypertension**

CONVENER: Pamela Jo Johnson

Session 1D*Room 156***PAPER SESSION****Student Paper Competition**

CONVENER: Nancy Omondi

Session 2C*Room 155***PAPER SESSION****Provider Decision Support**

CONVENER: Adam Powell

Session 2D*Room 156***PAPER SESSION****Emergency Room**

CONVENER: Brian Martinson

Session 3C*Room 155***PAPER SESSION****Patient Education**

CONVENER: Terry Bernhardt

Session 3D*Room 156***PAPER SESSION****Outcomes/Costs**

CONVENER: Kristina Bloomquist

Session 4C*Room 155***PAPER SESSION****Behavioral Health**

CONVENER: Heather Britt

Session 4D*Room 156***PAPER SESSION****Health Disparities**

CONVENER: Erik Zabel

SYMPOSIUM 1A **Putting Out the Welcome Mat—Targeting Outreach Efforts under the Affordable Care Act**

DESCRIPTION: This proposed symposium highlights three distinct data-driven strategies for targeting outreach in Minnesota to individuals eligible for Medicaid coverage or subsidies under the ACA. Presenters will include researchers from the State Health Access Data Assistance Center (SHADAC) within the University of Minnesota's School of Public Health and the session will be convened by a policy expert with programmatic outreach experience. One presentation will provide a broad overview of the characteristics of Minnesota's uninsured and those most likely eligible for coverage under the ACA's newly expanded health reform categories. Another presentation will profile a select group of current high risk pool enrollees who may enter the individual health insurance coverage market in 2014. Our final presentation will highlight findings from a unique state outreach program created in 2008 to increase access to care for vulnerable populations.

CONVENER: Stephanie Radtke Deputy Director, Community Services Division Dakota County

PRESENTERS: Jessie Kemmick Pintor, MPH Research Assistant SHADAC, University of Minnesota, Elizabeth Lukanen, MPH Senior Research Fellow SHADAC, University of Minnesota, Kristin Dybdal, MPA Senior Research Fellow SHADAC, University of Minnesota

PAPER SESSION 1B **Quality**

DESCRIPTION: Improving and visualizing quality of care

CONVENER: Ellen Denzen

- Visualizing Provider Quality and Market-Area Demographics using Physician Clinic Service Areas—*Nate Kabat, MS; Denise McCabe, MPP; Catherine Lexau, PhD, MPH, RN*
- A Multi-Hospital System Quality Improvement Process for Reduction of Elective Induction of Labor Less Than 39 weeks Gestation—*Shannon Steinbring, MPH; Anna Bernard, MPH; Elizabeth Elfstrand, MD; Sandy Hoffman, MS, RNC-EFM, CNS-BC; Mary Lou Hines, MSN, RN, CPNP, BA; Shannon Steinbring, MPH; Nancy Dickerson, MD*
- Achievement of Improved Optimal Vascular Care Criteria in a Primary Care Practice—*Jacquelyn Huebsch*

PAPER SESSION 1C **Hypertension**

DESCRIPTION: Addressing hypertension challenges and issues in innovative ways

CONVENER: Pamela Jo Johnson

- Effects of a Telephonic Maternity Care Management Program Among Women With Gestational Hypertension—*Wade M. Bannister, PhD; Melissa Lo*
- Recidivism to Uncontrolled Blood Pressure Levels in Patients with Previously Controlled Hypertension—*Patrick J. O'Connor, MD, MA, MPH; Steve Asche, MA; JoAnn Sperl-Hillen, MD; David Price, MD; Heidi Ekstrom, MA; Heather Tavel; Olga Godlevsky; David Magid, MD; Karen L. Margolis, MD, MPH*
- Outcomes at six months of a randomized trial of home blood pressure telemonitoring with pharmacist case management—*Karen L. Margolis, Anna R. Bergdall, Stephen E. Asche, Joann M. Sperl-Hillen, Michael V. Maciosek, Nicole K. Trower, Tessa J. Kerby, Rachel A. Pritchard, Jaime L. Sekenski, and Patrick J. O'Connor*

PAPER SESSION 1D **Student Paper Competition**

DESCRIPTION: The purpose of this session is to honor outstanding student papers in the field of Health Services Research. The first place, second place and third place student papers will be presented in this session. Award winners will be announced during lunch.

CONVENER: Nancy Omondi

- Mediating Effect of Care Continuity – *Subna Lee; Richard Adair MD, Jon Christianson PhD, Katie White EdD, Doug Wholey PhD*
- Morning Bell: The Effect of Earlier School Days on Adolescent Health and Academic Outcomes—*Heather Dahlen*
- Regional Variation in Costs of Hematopoietic Cell Transplantation: An Analysis of the 2008-2010 Nationwide Inpatient Sample—*Viengneese Thao, MS Candidate; Ezra Golberstein, PhD; Katy B. Kozbimannil, PhD; Jaime Preussler, MS; Ellen M. Denzen, MS; Navneet S. Majbail, MD, MS*

SYMPOSIUM 2A **Evaluating Minnesota's Health Care Home**

DESCRIPTION: This symposium describes Minnesota's health care home initiative, the evaluation design for it, early quantitative results comparing costs and quality for individuals served by a health care home, and early qualitative results describing how the health care home program works at the state and clinic levels.

CONVENER: Douglas R. Wholey, University of Minnesota

PRESENTERS: Marie K. Maes-Voreis, Minnesota Department of Health, Douglas R. Wholey, University of Minnesota, Michael Finch, Finch & King, Inc., Katie M. White, University of Minnesota

SYMPOSIUM 2B **Evaluating Health Care Reform: Are Federal and State Surveys Meeting the Need?**

DESCRIPTION: The passage of the Patient Protection and Affordable Care Act (ACA) in 2010 reinforced and generated new data needs for monitoring and evaluating health reform in the United States overall and in individual states. Staff at the State Health Access Data Assistance Center (SHADAC) at the University of Minnesota, School of Public Health recently developed a framework for tracking the impacts of the ACA. The framework focuses on monitoring change over time in three main areas relevant to the ACA: health insurance coverage (uninsurance, public coverage, employer-sponsored insurance, and health insurance exchange); affordability and comprehensiveness of health insurance coverage (cost-sharing, financial burden associated with health insurance); and access to health insurance services (use of services including usual sources of care and preventive care services, barriers to care including difficulty finding a provider, system-level access, and the role of safety net providers). Studying the effects of the ACA on these key outcomes will not only provide important insights for federal and state policymakers early on in the full implementation of the ACA but inform future policy decisions as well.

Possible data sources for assessing the impact of the ACA include general population surveys, provider surveys, Medicaid and all-payer claims databases, and health plan data reported to insurance regulators. This symposium will focus on federal and state-level general population surveys and adjustments these surveys have made in the past couple of years to address information needs related to health reform policy. Key survey changes have included sample improvements (e.g., increase in sample sizes for individual states, oversampling enhancements); expansions in survey questionnaire content specifically relevant to health reform (e.g., insurance coverage via a health insurance exchange); and attempts to expedite access to policy-relevant data for timely analysis and dissemination. Our symposium will concentrate on adjustments in questionnaire design and will summarize changes to U.S. Census Bureau and National Center for Health Statistics (NCHS) surveys and health surveys conducted in select states in response to the new health reform environment. Three federal surveys will be addressed: the Current Population Survey (CPS), the American Community Survey (ACS), and the National Health Interview Survey (NHIS). Our symposium will highlight the strengths and weaknesses across these surveys and discuss outstanding gaps in information needs related to monitoring and evaluating ACA and health reform efforts in general.

CONVENER: Donna Spencer, PhD Senior Research Associate SHADAC, University of Minnesota

PRESENTERS: Joanna Turner, MS Senior Research Fellow SHADAC University of Minnesota, Heather (Mattson) Dahlen, MA Research Assistant SHADAC University of Minnesota, Kathleen Thiede Call, PhD Professor University of Minnesota, School of Public Health

PAPER SESSION 2C **Provider Decision**

DESCRIPTION: Innovative ways to augment provider decision making

CONVENER: Adam Powell

- Developing and Deploying Evidence-Based Clinical Decision Support for Aspirin Use at the Point of Care—*JoAnn Sperl-Hillen, MD; Deepa Appana; Karen Margolis, MD, MPH; Tom Kottke, MD, MSPH; Heidi Ekstrom, MA; Jerry Amundson; Patrick O'Connor, MD, MA, MPH*
- Usefulness of Patient Self Report in Pre-operative Cardiac Risk Assessment—*Sharad Manaktala*
- Virtual Diabetes Education Improves Resident Physician Knowledge and Performance: A Cluster-Randomized Trial—*JoAnn Sperl-Hillen, MD; Patrick O'Connor, MD, MA, MPH; Heidi Ekstrom, MA; Steve Asche, MA; Paul Johnson; Deepa Appana*

PAPER SESSION 2D **Emergency Room**

DESCRIPTION: Addressing a range of issues in the Emergency Room

CONVENER: Brian Martinson

- Efficiency of Emergency Department (ED) Use in Minnesota Over Five Years: Policy Implications—*Elizabeth Egan*
- Self-reported Emergency Department Visits and Reasons for Going by Insurance Status—*Alisha Baines Simon*
- Using ER Visitation Data to Identify Health Improvement Opportunities for Public Program Enrollees—*Scott Ode*

SYMPOSIUM 3A **LifeCourse: Development and Implementation of a Late Life Supportive Care Intervention**

DESCRIPTION: This symposium describes the creation and evaluation of a comprehensive, systemic approach to caring for patients and families, that promotes living well with a life limiting illness.

CONVENER: Eric W. Anderson, MD, Palliative Medicine, United Hospital, Allina Health Center for Healthcare Research & Innovation

PRESENTERS: Sandra Schellinger, MSN, RN, NP-C, Center for Healthcare Research & Innovation, Allina Health; Heather Britt, MPH, PhD, Center for Healthcare Research & Innovation, Allina Health; Monica Schmitz Frazer, MA, PhD, Center for Healthcare Research & Innovation, Allina Health

PAPER SESSION 3B **Methods**

DESCRIPTION: Describing and applying innovative research methods

CONVENER: Kevan Edwards

- Matching Patients across Institutions without Definitive Patient Identifiers—*Stephanie Peterson BS, Ahmed Rahman MHI, Michael Pine MD MBA, Jaclyn Roland, Mark Sonneborn, Joe Schindler, Matt Johnson MPH, Diane Olson MA, Sue Visscher PhD, Kyle Koenig, James M Naessens ScD*
- Robust Feature Selection for Improved Care Management for Patients with a Risk for a Potentially Preventable Event.—*Chandrima Sarkar, Prasanna Desikan, PhD, Tammie Lindquist, Tamara Winden, Jaideep Srivastava, PhD*
- Efficacy of a Novel Video Game to Help Diagnose ADHD—*Kurt Roots, MBS, MS; Monika Heller, MD; Jaideep Srivastava, PhD; Sanjana Srivastava; Jennifer Schumann, MD*

PAPER SESSION 3C **Patient Education**

DESCRIPTION: Describing innovative ways to educate patients or augment their decision making.

CONVENER: Terry Bernhardt

- Sources of Information Used in Selecting Surgeons—*Caroline S. Carlin, PhD; John Krlewski, PhD; Megan Savage, BS*
- Was a Decision Made? An Assessment of Discordance Between Patients and Physicians in a Medical Oncology Encounter—*Aaron Leppin, MD; Katherine James, MPH; Cara Fernandezb; Ashok Kumbamu, PhD; Kathleen Yost, PhD; Victor M. Montori, MD; Jon Tilburt, MD*
- A Structured Curriculum to Enhance a Peer-led National Support Group Network—*Dawn Witt, MPH; Teresa Ambroz, MPH, RD, LD; Chinenye Anyanwu, PharmD, MPH; Jackie Boucher, MS, RD, LD, CDE*

PAPER SESSION 3D **Outcomes/Costs**

DESCRIPTION: Addressing a range of costs and other outcomes issues

CONVENER: Kristina Bloomquist

- Hospital Cost of Total Hip Arthroplasty is Higher in Patients with Developmental Dysplasia of the Hip Compared to Degenerative Arthritis—*Ali Ashraf, MD; A. Noelle Larson, MD; Walter K. Kremers, PhD; Hilal Maradit Kremers, MD; Anthony A. Stans, MD; David G. Lewallen, MD,*
- Traffic-related Injuries and Long-term Health Outcomes Among U.S. Non-institutionalized Adults: A Population-based Study—*Suliman Alghnam*
- Provider and Center Factors in Outcomes of Allogeneic Hematopoietic Cell Transplantation—*Ellen Denzen, Tammy Payton, Pintip Chitphakdithai, Ying Shan, J Douglas Rizzo, Elizabeth Murphy, Navneet S Majhail*

PAPER SESSION 4A Insurance/ ACA

DESCRIPTION: Addressing health insurance issues

CONVENER: Nina Alesci

- State Variation in Potential for ACA Reforms to Address High Burden Medical Out of Pocket Spending: Results from the Current Population Survey—*Lacey Hartman, Gilbert Gonzales*
- Substantial Variation in Medicaid Coverage for Hematopoietic Cell Transplantation—*Jaime Preussler, MS; Stephanie Farnia, MPH; Ellen M. Denzen, MS; Navneet S. Majbail, MD, MS*
- Duration of Uninsurance in Minnesota in 2007 and 2011: Implications for State Health Policy Decisions—*Anne Krohmer*

PAPER SESSION 4B Quality 2

DESCRIPTION: Addressing issues related to improving quality of care

CONVENER: Steven Dehmer

- How Fatigue and Dissatisfaction Influences Physicians' Perceptions and Decisions—Results of a U.S. Physician Survey—*Erin P. O'Donnell*
- Improving Preventive Care through Integration in Acute Care Clinic Visits—*Jeanne Busch BSBA; Kathleen Kummer BA MS; Hilary Radtke BS; and Scott Shimotsu, PhD MPH CPHQ Hennepin County Medical Center (HCMC)*
- Community-Based Initiative to Improve Care Transitions and Prevent Hospital Readmissions—*Deepika Sharma*

PAPER SESSION 4C Behavioral Health

DESCRIPTION: Addressing issues in behavioral health

CONVENER: Heather Britt

- Effects of Motivational Interviewing Counseling on Utilization of a Quitline among Smokers in Primary Care—*Kolawole S. Okuyemi, MD MPH; Janet Thomas, PhD; Hongfei Guo, PhD; Kathryn Goldade, PhD; Kevin Peterson, MD; Barrett Sewali, MBChB.; Jasjit S. Ahluwalia, MD; Matthew Carpenter, PhD; Christi Patten, PhD; Edward Ellerbeck, MD*
- Association of BMI and Change in BMI on Progression From Normotension to Prehypertension or Hypertension in Patients Ages 3-17—*Emily Parker, PhD, MPH; Patrick J. O'Connor, MD, MA, MPH; Nicole Trower; Heather M. Tavel; Nancy Sherwood, PhD; Elyse Kharbanda, MD, PhD; Matthew F. Daley; Kenneth F. Adams, PhD; David R. Jacobs, Jr; Alan R. Sinaiko; Karen L. Margolis, MD, MPH; Louise C. Greenspan; Joan C. Lo; David J. Magid;*
- How Effective is Health Coaching in Improving Health Outcomes and Reducing Health Services Utilization and Costs?—*Yvonne Jonk, Karen Lawson, Heidi O'Connor, Kirsten Riise, David Eisenberg, Mary Jo Kreitzer*

PAPER SESSION 4D Health Disparities

DESCRIPTION: Addressing health disparities issues

CONVENER: Erik Zabel

- Access and Barriers to Medical Care Among Publicly Insured Adults with Disabilities—*Carrie Henning-Smith, MPH, MSW; Donna McAlpine, PhD; Tetyana Shippee, PhD; Michael Priebe, MD, MPH*
- Health Care Supply Chain Design for Primary Care: Reducing Disparities in Behavioral Health Care Delivery—*David Zepeda, PhD; Kingsbuk K. Sinba, PhD*
- Reducing Hospital Readmissions Among a Diverse Racial/Ethnic Minority and Immigrant Patient Population—*Scott T Shimotsu, PhD MPH CPHQ; Kim O'Brien, MHI CPHQ; Lori L Johnson, RN MA; Pam Clifford, RN, MPH; Sandy Hilliker, RN DNP; and Inna Baum, BA; Hennepin County Medical Center (HCMC)*

Seventeenth Annual Minnesota Health Services Research Conference

Tuesday, March 5, 2013

**Continuing Education and Conference Center
1890 Buford Avenue
St. Paul, MN 55108**

For additional information, call
Cecilia Colizza at 612-624-7990 or
email: ccolizza@umn.edu

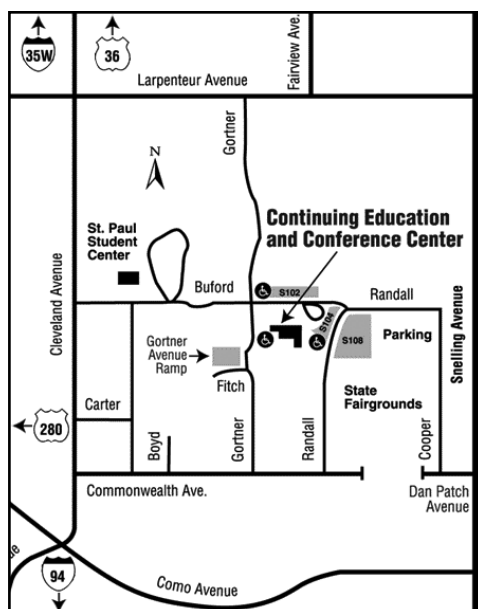
Directions to the Continuing Education and Conference Center

FROM I-694 take 35W south to the Cleveland Avenue exit (Note: exit to the left). Follow Cleveland Avenue to Larpenteur Avenue. Go east (left) on Larpenteur to Gortner, turn south (right) on Gortner and go to Buford Avenue. Turn east (left) on Buford Avenue to the parking area.

FROM I-35W take the Highway 36 exit and turn south on Cleveland Avenue to Larpenteur Avenue. Go east (left) on Larpenteur to Gortner, turn south (right) on Gortner and go to Buford Avenue. Turn east (left) on Buford Avenue to the parking area.

FROM DOWNTOWN ST. PAUL go west on I-94 to Snelling Ave. Go north on Snelling Ave. to Larpenteur Avenue. Go west (left) on Larpenteur to Gortner, turn south (left) on Gortner and go to Buford Avenue. Turn east (left) on Buford Avenue to the parking area.

FROM DOWNTOWN MINNEAPOLIS go east on I-94 to MN-280, exit number 236. (Note: exit to the left). Merge onto MN-280 north. Exit at Larpenteur Ave. Take Larpenteur east (right) to Gortner (3rd traffic light). Turn south (right) on Gortner and go to Buford Avenue. Turn east (left) on Buford Avenue to the parking area.



Parking

Free parking to the first 225 vehicles will begin at 7:30 a.m. Enter **Lot S104** and tell the parking attendant you are with the “HSR CONFERENCE.”

Accreditation

Continuing Education Units—This program carries 0.6 CEUs for those participating in the entire program. There is a \$10 additional administrative charge for persons requesting CEU credit. Please check with your accrediting organization or professional society about accepting these conference credits.

Educational Objectives

Following this conference, participants will be able to:

- Discuss the issues presented in each of the concurrent sessions attended.
- Demonstrate increased awareness about state and national health policy issues.
- Understand and discuss current health services research issues.
- View their part of the health care environment with the added perspective of other disciplines represented at the conference.
- Contact other health services researchers with similar research interests.

Registration

Registration Fee: The registration fee for the conference is \$60. There is a \$10 additional administrative charge for persons requesting CEU credit. No partial day or group rates are available. Presenters, discussants, conveners, and sponsors must register for the conference and pay the standard registration fee. The fee for students registered for at least 6 credits (and not employed by a sponsoring organization) is \$32. Students are eligible to apply for a scholarship for a reduced conference fee.

Student Scholarships: Ten undergraduate/graduate student scholarships are available on a first come, first served basis at a registration rate of \$15. These scholarships are offered to cover the registration fee for students who are registered for at least six credits and have an interest in health services research. To apply, please write a brief paragraph describing your interest in health services research and/or the conference theme. Your submission will be evaluated and you will be notified of the outcome within several days of our receipt of the application. Forward your statement by e-mail to Cecilia Colizza at ccolizza@umn.edu, and complete the on-line registration form (see links below), noting your scholarship request.

To register for the conference, please follow the URL link listed below.

Payment by credit card option: If your registration fee is being paid by credit card, please fill out the registration and payment information at: register.cce.umn.edu Enter Course Event ID: **187028**.

Payment by check option: If your registration fee is being paid by personal or business check, please contact Cecilia Colizza (612-624-7990).

You may cancel your registration until February 23, 2012. Provide written notification of cancellation in order to receive a refund of your registration fee minus a \$10 cancellation fee.

To correspond by mail, please use the following address:

SEVENTEENTH ANNUAL MINNESOTA HEALTH SERVICES RESEARCH
CONFERENCE
Division of Health Policy and Management
University of Minnesota School of Public Health, c/o Cecilia Colizza
420 Delaware Street SE, MMC 729
Minneapolis, MN 55455-0374

The registration fee for the Minnesota Health Services Research Conference covers the cost of a continental breakfast, break refreshments, lunch, and cocktail reception. A vegetarian meal will be available. The sponsoring organizations cover all other conference costs.

Please contact us if you have special mobility needs so we can arrange for these prior to the conference for you.

For additional information, contact Cecilia Colizza at 612-624-7990 or email: ccolizza@umn.edu

This registration brochure can be downloaded at www.hpm.umn.edu.

The web site for conference registration and payment is at register.cce.umn.edu (Event ID: **187028)**

The University of Minnesota is an equal opportunity educator and employer.

